



Warren Pitt MP
Member for Mulgrave



Queensland
Government

Our ref: MC36832

Your ref: 1097-08

11 SEP 2008

Mr Neil Laurie
The Clerk of the Parliament
Parliament House
George Street
Brisbane Qld 4000



Minister for Main Roads and
Local Government



Dear Mr Laurie

I refer to petition numbered 1097-08 lodged with the Legislative Assembly by Ms Vicky Darling MP, Member for Sandgate, on 27 August 2008, about noise levels from the Gateway Motorway at Deagon.

The Department of Main Roads manages road traffic noise in accordance with its *Road Traffic Noise Management: Code of Practice*. The code of practice sets out a standard process for dealing with the effects of road traffic noise for all noise-sensitive receptors adjacent to state-controlled roads. The code of practice contains noise level intervention criteria, which must be met before Main Roads will consider treatment of noise-affected properties. This is to ensure all properties adjacent to state-controlled roads are subjected to the same standard criteria. For established properties experiencing noise from state-controlled roads, the noise level must exceed 68 decibels {dB(A)} for noise reducing treatments to be considered.

Main Roads recently finalised its Road Traffic Noise Management Strategy for Metropolitan Region, which includes the Gateway Motorway. Noise levels at each property have been calculated based on the application of road traffic noise modelling across the entire Metropolitan Regional state-controlled network. This strategy document is used to prioritise investigations into areas which are eligible for consideration of noise reducing treatments. Eligibility is determined by whether or not noise levels in an area exceed the department's intervention criteria of 68dB(A). The results from the strategy, for the properties along the Deagon section of the Gateway Motorway, indicate noise levels in the area warrant further detailed noise modelling.

I am advised noise modelling involves calculation of road traffic noise levels for all properties adjacent to the roadway in each study area. Noise levels are calculated for the current year of the study, as well as 10 years into the future, based on forecast traffic growth.

I am further advised the Gateway Motorway North Planning Study is currently investigating options for upgrading the Gateway Motorway between Nudgee and the Bruce Highway at the Pine River. As part of this study, detailed investigations will be undertaken to assess noise impacts associated with each option, as well as the extent of works required to mitigate noise levels, in accordance with the Main Roads code of practice.

Level 18 41 George Street Brisbane
PO Box 15031 City East
Queensland 4002 Australia
Telephone +61 7 3227 8819
Facsimile +61 7 3221 9964
Website www.qld.gov.au

Main Roads advises in early 2009, newsletters and public displays will inform the community of the options under consideration for the motorway upgrade. Members of the community will be given the opportunity to discuss the merits of the options with the study team. Information will be available at this time on the noise impacts and proposed mitigation measures associated with each of the options. Members of the community will be encouraged to provide their views on the proposals under consideration.

Enclosed for further information is a newsletter about the project, which was distributed to the community in November 2007.

I trust this information clarifies Main Roads' position on this matter. If petitioners would like more information about the project, they can contact the project team on Freecall 1800 991 879.

If petitioners require further information about how Main Roads manages road traffic noise, they are welcome to call Mr Norman Scott, Senior Environmental Officer in Brisbane, on 3137 8476. Mr Scott will be pleased to assist.

Yours sincerely



Warren Pitt MP
Minister for Main Roads

Enc (1)

Gateway Motorway: North Planning Study

Newsletter 1

October 2007

Preparing a future Gateway

The Department of Main Roads is conducting a planning study on 16 km of the Gateway Motorway from south of Nudgee Golf Course to the Bruce Highway.

With the South East Queensland population projections forecasting continued growth, traffic volumes on the motorway are likely to rise from about 40,000 vehicles per day to about 80,000 vehicles per day by 2026.

Over the next two years we will develop a preferred option which best caters for future traffic growth and addresses the safety and efficiency of road users. To achieve a preferred option, we need your input.



We are aware of several issues about the Gateway Motorway, including:

- » traffic incidents at Deagon and Nudgee
- » delays at the Bicentennial Drive interchange during major events at the Brisbane Entertainment Centre
- » congestion and delays at interchanges during peak hours.

Please tell us what you think. Do you agree with the above issues? What issues do you have? You can use the enclosed feedback form or one of the many contact methods outlined on the back page. Your input will help us determine options that consider the broader views of the community.

This newsletter is the first point of contact. We will be hosting staffed public displays in shopping centres and setting up fixed displays in libraries and elected representatives' offices to capture your comments.

Let's plan the future of the Gateway together.

Get involved

We need your issues, ideas, opinions, thoughts and concerns with this study. No feedback is considered too small – we understand that to deliver a preferred option, we need to take onboard all community feedback.

There are a number of ways to provide your feedback:

- » **Go to** a staffed or fixed display
- » **Join** a community reference group
- » **Contact** us by mail, phone or email
- » **Visit** the Main Roads website
- » **Fill out** and return the feedback form enclosed in this newsletter by 30 November 2007.

See detailed information on these contact methods on the following pages, and find the feedback form enclosed.

We will continue to update you on the project through newsletters, letters, advertisements, fact sheets and the Main Roads website.

We are
here

Stage 1: Gathering information

Stage 2: Determine upgrade options

Stage 3: Deliver preferred option

Main Roads – Connecting Queensland



Queensland Government
Department of Main Roads

Other investments in the Gateway Motorway

The South East Queensland (SEQ) region is Australia's fastest-growing region, attracting on average 55,000 new residents each year over the past two decades. The region is also experiencing rapid employment growth and is emerging as a significant economic hub with national and international recognition.

The Queensland Government is delivering the state's most ambitious infrastructure program, not only in SEQ but across the state. This program includes investment in the Gateway Motorway through this study, the Gateway Upgrade Project and the Gateway Motorway: South Planning Study.

Gateway Upgrade Project

The Gateway Upgrade Project will duplicate the Gateway Bridge and provide upgrades to 20 km of the Gateway Motorway from Mt Gravatt-Capalaba Road to Nudgee Road. The project includes a new Gateway Motorway deviation extending from the Gateway Bridges through the old and existing airport site to Nudgee Road. To deliver timely benefits to motorists, additional lanes will be opened to traffic as they are completed. The new Gateway Motorway deviation will open four lanes to traffic in late 2009. The northern part of the Gateway Upgrade Project is shown on the map.

To find out more, contact the Gateway Upgrade Project on 1800 600 525 or visit www.gatewayupgradeproject.com.au

Gateway Motorway: South Planning Study

Main Roads is planning to upgrade the Gateway Motorway between and including the interchanges with the Pacific Motorway and Mt Gravatt-Capalaba Road. This will involve widening this section of the motorway. The upgrade will improve road safety, ease congestion and cater for increased traffic demand.

To find out more about this project, please visit the Main Roads website, www.mainroads.qld.gov.au.

Community reference groups

Main Roads is seeking expressions of interest from regional residents, business owners and community leaders to join a community reference group (CRG) for their local area.

Local residents, business owners and those involved in community organisations can all be part of a CRG. CRGs help us gather information and views to assist the Gateway Motorway: North Planning Study team.

Detailed information about how you can become a member of a CRG is available by contacting us via any of the methods listed opposite.

Contact us

You can contact the study team through any of the following methods.

Website: www.mainroads.qld.gov.au

Phone: Freecall 1800 991 879

Email: gatewaynorth@mainroads.qld.gov.au

Post: Gateway Motorway: North Planning Study
Reply Paid 105
Fortitude Valley Q 4006



Go to our staffed displays

From 7 November to 30 November 2007, Main Roads will be hosting staffed public displays at these locations:

Chermside Library

375 Hamilton Road, Chermside
7 November – 10 November 2007 (10am – 2pm)

Bracken Ridge Plaza

Cnr Telegraph and Norris Roads, Bracken Ridge
13 November – 14 November 2007 (10am – 2pm)

Centro Taigum

Cnr Church and Beams Roads, Taigum
20 November – 21 November 2007 (10am – 2pm)

Toombul Shopping Centre

1015 Sandgate Road, Toombul
27, 28, 30 November (10am – 2pm)
29 November 2007 (4pm – 8pm)

The displays will be staffed by our study team who can answer your questions.

Go to our fixed displays

Main Roads will also have fixed displays, which are not staffed, at libraries and local elected representatives' offices from 5 November 2007 to 30 November 2007. Fixed display sites are:

Banyo Library, St Vincent's Road, Banyo

Bracken Ridge Library, Bracken Street, Bracken Ridge

Sandgate Library, Second Avenue, Sandgate

Office of Hon Neil Roberts MP, Cnr Toombul and Melton Roads, Northgate

Office of Bonny Barry MP, Shop 2, 1315 Gympie Road, Aspley

Office of Vicky Darling MP, 7 Third Avenue, Sandgate

What happens during a study

During a planning study Main Roads needs to undertake a number of investigations. These investigations will provide a complete picture of the area we are working in.

Some of these investigations include:

- » reviewing environmental and cultural heritage elements, which includes liaising with indigenous groups to ensure we identify all sites of cultural significance, investigating how our options can have the least impact on environmental and cultural heritage values
- » analysing road data such as the effect of options on local and state traffic networks, travel times, the road surface and volume of traffic, which helps to assess the safety and efficiency of the road
- » geotechnical surveys such as soil testing to make sure any option can be built

You may see work starting on these investigations in the near future.



Study timing

We are here

Stage 1: Gather information

This stage includes establishing community reference groups, briefing key community leaders and groups, staffed and fixed public displays and generally seeking information to assist Main Roads in determining options for the planning study.

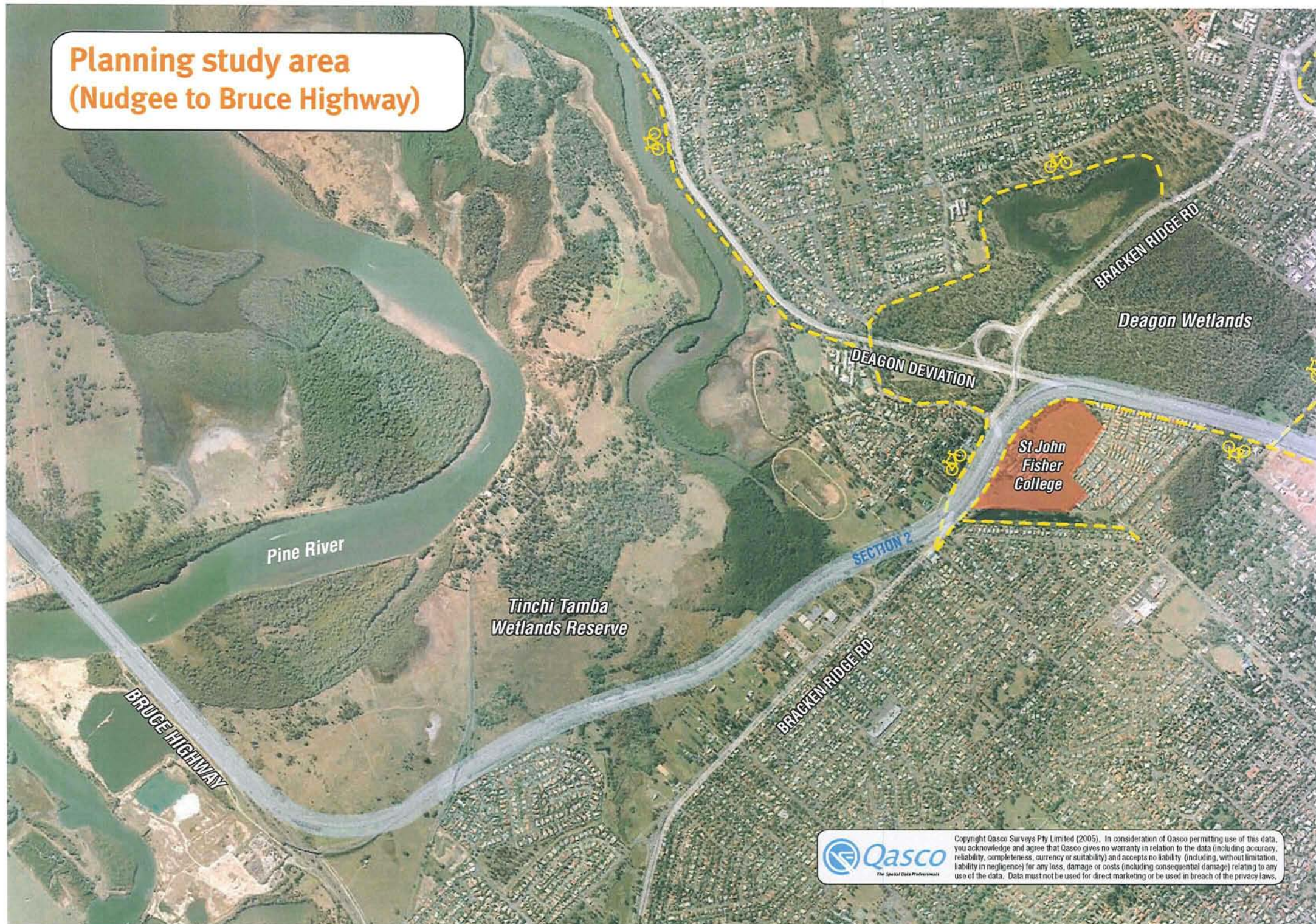
Stage 2: Determine upgrade options

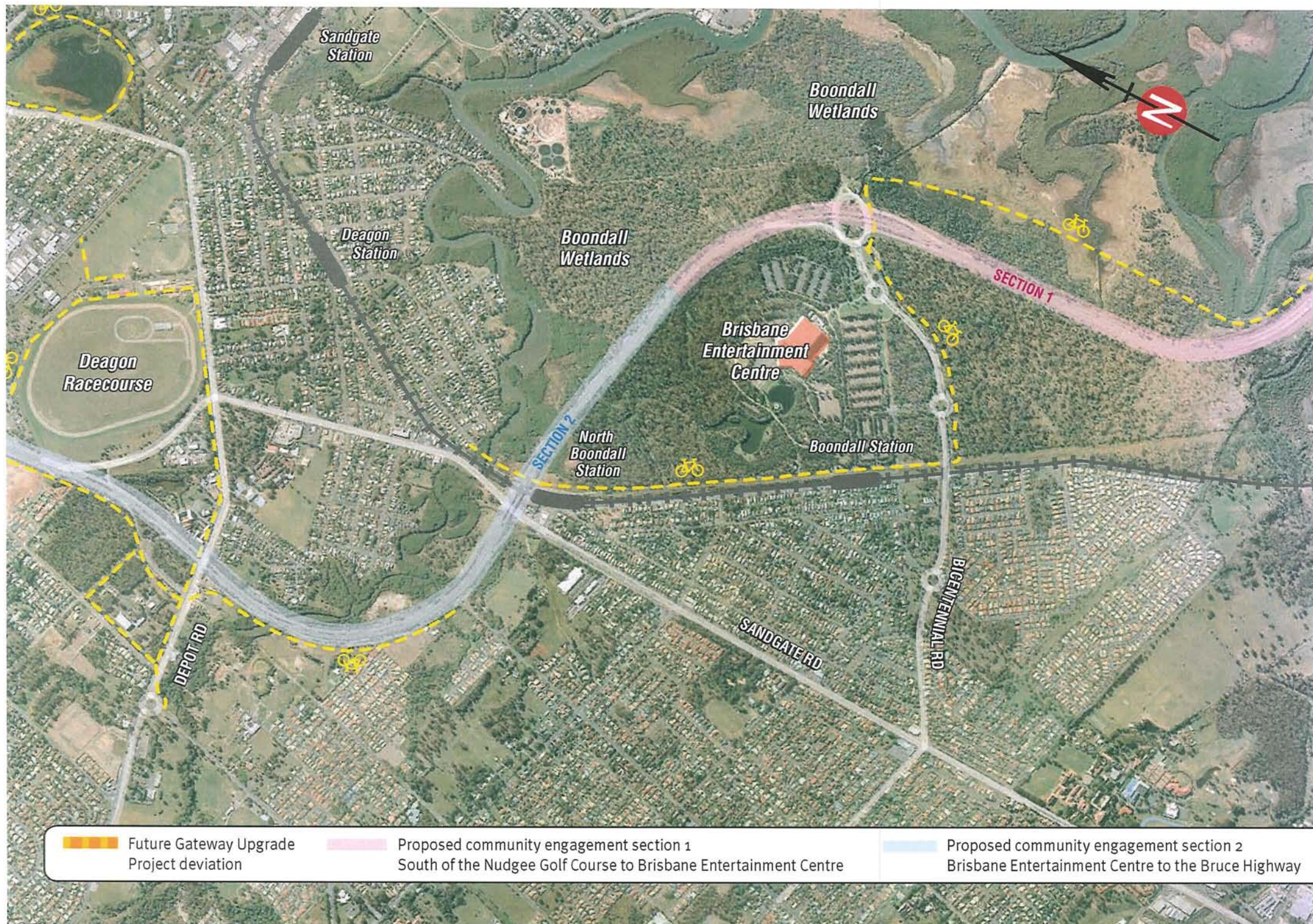
The options analysis phase is when options are presented to the community and the community provides feedback. This stage will include meetings of the community reference groups, staffed and fixed public displays, detailed briefings with community leaders and groups, focus groups and collecting detailed information from the public to determine a preferred option.

Stage 3: Deliver preferred option

Main Roads will inform the community about the preferred option and explain why it has been chosen.

**Planning study area
(Nudgee to Bruce Highway)**





Study area

The Gateway Motorway: North Planning Study extends from south of the Nudgee Golf Course to the Bruce Highway.

To help us better engage with you, we have divided the 16km corridor into two 'community engagement area' sections, as indicated on the map. The sections are:

1. South of the Nudgee Golf Course to Brisbane Entertainment Centre
2. Brisbane Entertainment Centre to the Bruce Highway

The reason we have divided the study into sections is because we understand that each section is unique, with different services, interests and issues for your consideration.

These sections do not indicate when each section will be upgraded or constructed.

