

# Townsville

## Regional Hospitals Redevelopment

Regional Queenslanders will benefit from **\$173.3 million** for hospital redevelopments in Cairns, Mackay, Townsville, Rockhampton and Mt Isa. The total estimated cost is **\$1.424 billion**.

### Cairns

- \$81.4 million for the \$446.3 million Cairns Hospital redevelopment, delivering an additional 168 beds by 2015.

The redeveloped Cairns Hospital will also provide an ambulatory cancer care centre, radiation oncology service, more cardiac care facilities, surgical capacity, intensive care capacity, birthing and special care nursery services and aged care and rehabilitation.

### Townsville

- \$41.2 million in 2014-15 for the \$334 million Queensland and Australian Government funded Townsville Hospital expansion.

The Townsville Hospital expansion will significantly expand health services in the Townsville region and deliver long-term local benefits. It will include an emergency department, maternity unit, intensive care unit, neonatal intensive care services, operating theatres, clinical support and services, pathology expansion, Townsville Cancer Centre expansion and Planned Procedure Centre.

### Mackay

- \$29.4 million for the \$408.3 million Mackay Base Hospital redevelopment.

The Mackay Base Hospital redevelopment will almost double bed capacity to 318 beds. It will include emergency and outpatients departments, delivery suites and special care nursery, an intensive care and coronary care unit, inpatient surgical and medical wards, renal support, dental services and a mental health facility.

### Rockhampton

- \$13.6 million for the \$173.1 million Queensland and Australian Government funded Rockhampton Hospital expansion.

The Rockhampton Hospital expansion has included increasing capacity by 30 beds, four new operating rooms and support areas, a new eight-level building to house cancer services, medical officers' facilities, two wards and provision for a future intensive care unit.

## Townsville Ring Road

The Government is investing **\$80.4 million** in Stage 4 of the Townsville Ring Road, in partnership with the Australian Government.

As part of the Australian and Queensland Governments' strategy to improve the 1,700 kilometre Bruce Highway, this final stage will connect the route to the highway north-west of Townsville.

Stage 4 will be an 11 kilometre, four-lane, median divided section, built to motorway standard, which will cross the Bohle Plains. It will provide a safe, high-speed bypass of Townsville for heavy and commercial vehicles and direct access to and from the Port Access Road (currently under construction). Motorists will have greater certainty of travel as they will not be faced with the same delays experienced on the current Bruce Highway route. It will also better connect residential areas with employment centres.

Unlike the current Shaw Road route, Stage 4 will not be susceptible to flooding, a key concern for North Queensland communities.

Like the Toowoomba Second Range Crossing, Townsville's completed ring road will improve the standard of the National Network. It will maintain freight efficiency by reducing congestion with its more direct route for Port freight.

Read more about Townsville Ring Road at [www.tmr.qld.gov.au/Projects](http://www.tmr.qld.gov.au/Projects)

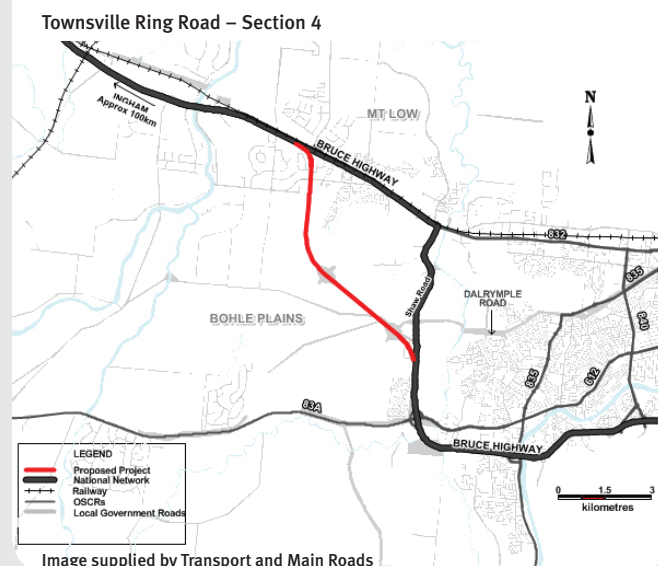


Image supplied by Transport and Main Roads

# A STRONG PLAN FOR A BRIGHTER FUTURE

## Regional Budget Statement TOWNSVILLE

This Budget continues to deliver a Strong Plan for a Brighter Future.

The 2014-15 Budget carefully balances **increases in education, health and community services spending, while not introducing or raising any new taxes or reducing services.**

Strong choices have to be made so that a brighter future can be ours; **we need to reduce the State's \$80 billion debt and the annual \$4 billion interest bill. This Budget outlines our plan to secure our finances by making the strongest and smartest choice to reduce debt** so we can sustainably invest in the schools, hospitals and infrastructure for the future.

We are making significant progress in restoring our finances, growing a four pillar economy, revitalising frontline services and funding infrastructure projects and jobs – **with more than 60,000 jobs created in Queensland in the last year.** To sustain this we must reduce debt, so we can truly keep building on our Strong Plan for a Brighter Future.

**Health**  
**6% to \$13.6 billion**

New and improving hospitals:

\$224.5 million towards building the Lady Cilento Children's Hospital

\$369.8 million towards building the Sunshine Coast Public University Hospital

\$173.3 million for the redevelopment of hospitals in Cairns, Mackay, Mount Isa, Townsville and Rockhampton

**Education**  
**7% to \$11.8 billion**

Great Results Guarantee

\$131 million to improve the numeracy and literacy of our children

10 new schools

under the \$1.4 billion Queensland Schools Project

**Transport and roads**  
**\$5.4 billion**

Toowoomba Second Range Crossing

\$321 million towards the history making \$1.6 billion, 41 km innovative toll road project

75 new six-car trains

Bruce Highway  
 \$768 million in 2014-15 to upgrade sections of the Bruce Highway

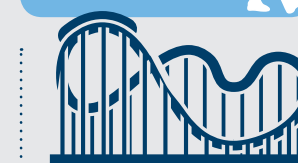
**Safe Night Out Strategy**  
**\$44.5 million** to address alcohol and drug-related violence

**267 new police**

**Royalties for the Regions**  
**\$495 million** for infrastructure improvements

Drought assistance  
**\$62 million**

**Safer Children**  
**\$406 million** for child and family services in response to the Carmody Inquiry



**Reef Water Quality Program**  
**\$55 million**

**\$33.9 million** for tourism marketing and event promotion

For more detail: [www.budget.qld.gov.au](http://www.budget.qld.gov.au)

Great state. Great opportunity.

