

 1/12/16.

**A PROPOSAL UNDER THE *NATURE CONSERVATION ACT 1992* AND A
BRIEF EXPLANATION OF THE PROPOSAL**

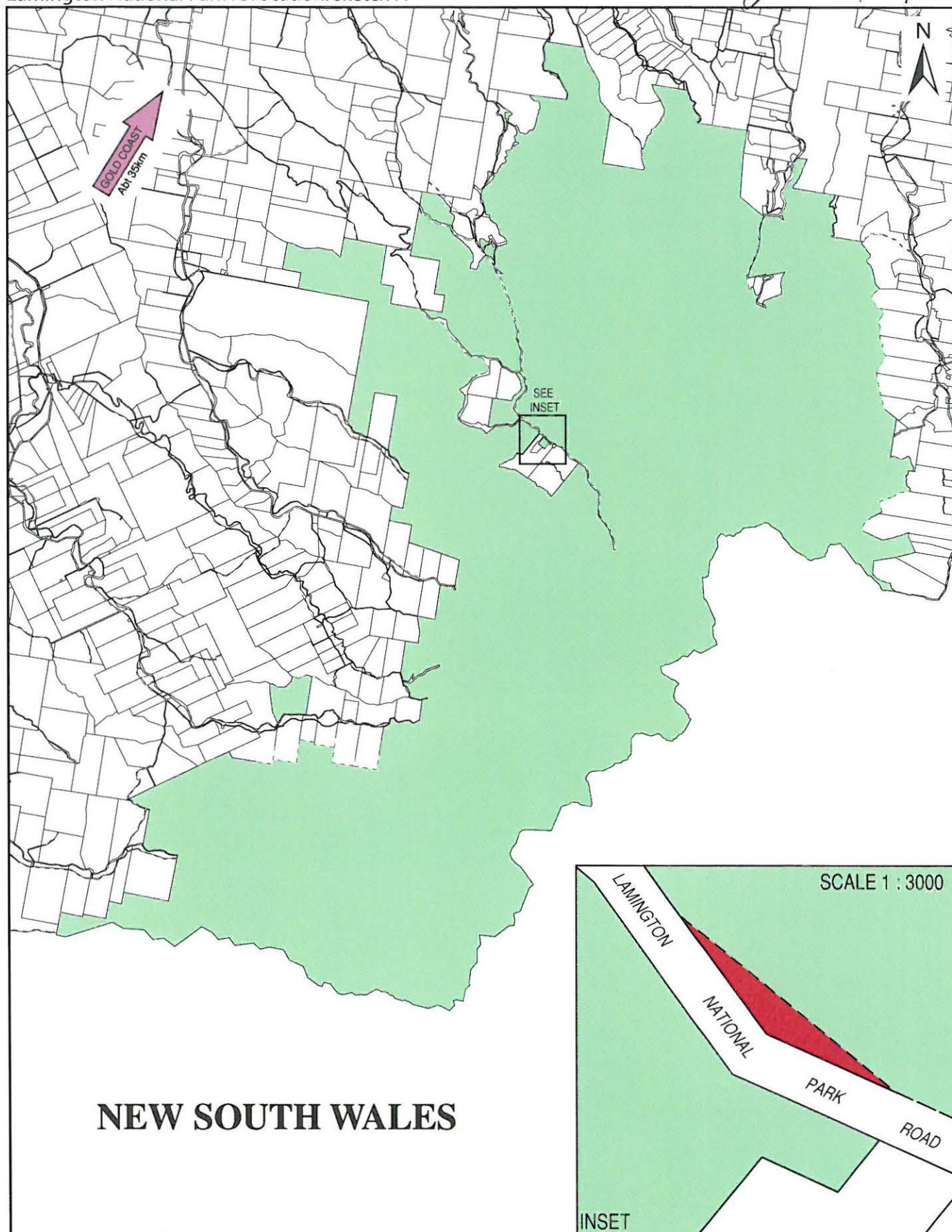
(A) A Proposal, under section 32 of the *Nature Conservation Act 1992*, requesting the Governor in Council to make a regulation:

- (i) revoking the dedication of part of Lamington National Park, containing an area of 0.1849 hectares described as lot 99 on SP274809, as illustrated on the attached “Lamington National Park: sketch A”.
- (ii) revoking the dedication of part of Hays Inlet Conservation Park 2, containing an area of 0.0069 hectares described as lot 10 on SP285607, as illustrated on the attached sketch “Hays Inlet Conservation Park 2: sketch B”.
- (iii) revoking the dedication of part of Palmview Conservation Park, containing an area of 0.7793 hectares described as lot 100 on SP284502, as illustrated on the attached “Palmview Conservation Park: sketch C”.

(B) A brief explanation of the Proposal.

- (i) The proposed revocation of an area of 0.1849 hectares described as lot 99 on SP274809, being part of Lamington National Park. Due to historical surveying and construction errors, the Lamington National Park Road road reserve lies over a portion of Lamington National Park’s Green Mountains Campground, while the actual constructed road pavement and drains are located in the national park. Ratification of these historical errors by ‘opening’ the existing constructed road, and in a subsequent action ‘close’ that part of the dedicated unconstructed road reserve that lies over a portion of the Green Mountains Campground for addition to Lamington National Park, will result in a net gain of 0.1396 hectares to the protected area estate.
- (ii) The proposed revocation of an area of 0.0069 hectares described as lot 10 on SP285607, being part of Hays Inlet Conservation Park 2. On completion of the construction of a drain culvert for the Moreton Bay Rail Link Anzac Avenue–Rothwell train station intersection, the Department of Transport and Main Roads established that the stone pitching from the drain culvert extends into Hays Inlet Conservation Park 2.
- (iii) The proposed revocation of an area of 0.7793 hectares described as lot 100 on SP284502, being part of Palmview Conservation Park. Pignata Road serves as an off-ramp for the south-bound lane of the Bruce Highway for access to the Aussie World tourism precinct. The Department of Transport and Main Roads requires part of Palmview Conservation Park to upgrade Pignata Road as part of its Bruce Highway–Caloundra Road to Sunshine Motorway Upgrade Project as alternative options for access to the western service road and Aussie World tourism precinct have been deemed unfeasible due to safety issues.

1/12/16



Queensland
Government

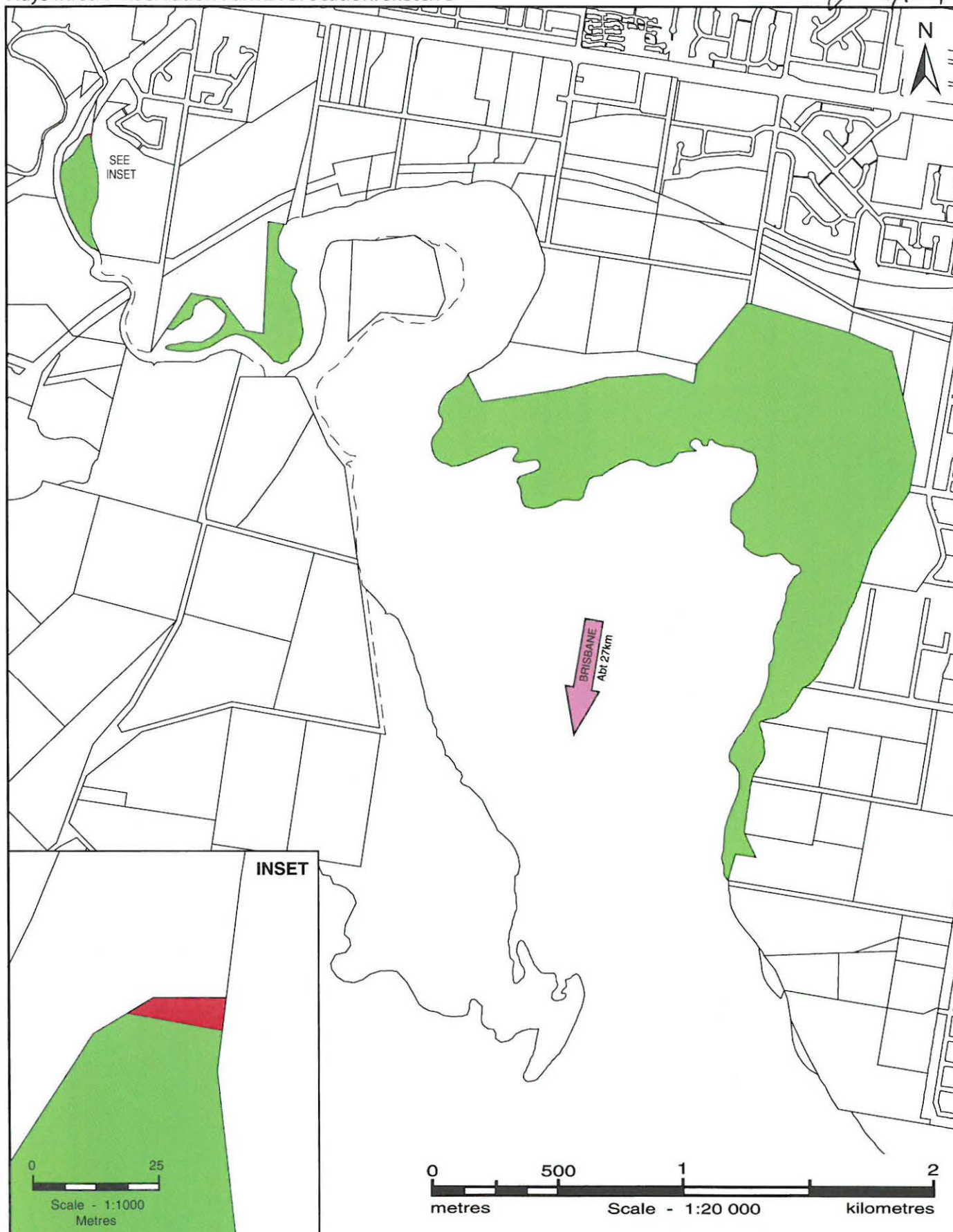
LAMINGTON NATIONAL PARK SHOWN

PROPOSED REVOCATION (Abt 1849m²) SHOWN.....

DISCLAIMER
This sketch is based on, or contains, data produced by the Department of Environment and Heritage Protection, Queensland and gives no warranty in relation to the data (including accuracy, reliability, completeness or suitability) and accepts no liability (including without limitation, liability in negligence) for any loss, damage or costs (including consequential damage) relating to any use of the data. Data must not be used for direct marketing or be used in breach of the privacy laws. © The State of Queensland Department of Environment and Heritage Protection 2016.

Hays Inlet Conservation Park 2 revocation: sketch B

1/12/16



Queensland
Government

HAYS INLET CONSERVATION PARK 2 SHOWN



PROPOSED REVOCATION (Abt 69m²) SHOWN.....



DISCLAIMER

This sketch is based on, or contains, data produced by the Department of Environment and Heritage Protection, Queensland and gives no warranty in relation to the data (including accuracy, reliability, completeness or suitability) and accepts no liability (including without limitation, liability in negligence) for any loss, damage or costs (including consequential damage) relating to any use of the data. Data must not be used for direct marketing or be used in breach of the privacy laws. © The State of Queensland Department of Environment and Heritage Protection 2016.

Palmview Conservation Park revocation: sketch C

J 1/12/16



PALMVIEW CONSERVATION PARK SHOWN

PROPOSED REVOCATION (Abt 0.7793 Ha) SHOWN.....

DISCLAIMER
 This sketch is based on, or contains, data produced by the Department of Environment and Heritage Protection, Queensland and gives no warranty in relation to the data (including accuracy, reliability, completeness or suitability) and accepts no liability (including without limitation, liability in negligence) for any loss, damage or costs (including consequential damage) relating to any use of the data. Data must not be used for direct marketing or be used in breach of the privacy laws. © The State of Queensland Department of Environment and Heritage Protection 2016.