

The Gold Coast and Logan region has a total population of **878,959*** which is expected to reach **1,492,000** by 2036

* persons as at 30 June 2014 growing at an annual average rate of 2.4% over the past 10 years



Agricultural production
\$193 million
2012-13

7,690 residential buildings approved for construction
in the 12 months ending 31 March 2015

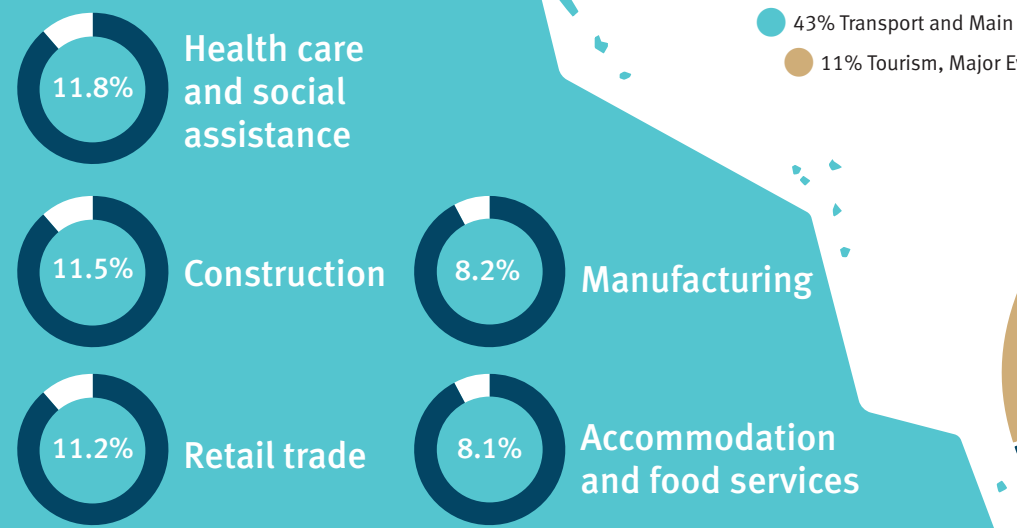


23,930 residential dwellings sold
in the 12 months ending 31 December 2014

80,532 businesses in Gold Coast and Logan in 2013-14

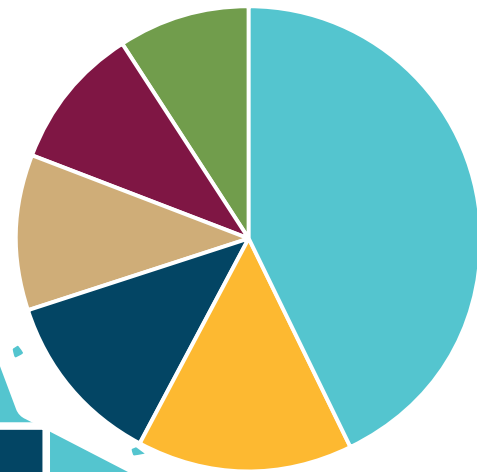


Top 5 Industries
by number of workers



Infrastructure improvement budget

- 43% Transport and Main Roads
- 15% Other
- 12% Energy and Water
- 11% Tourism, Major Events, Small Business and Commonwealth Games
- 10% Health
- 9% Education and Training



Major private sector investment projects currently under construction

Project	Investment
Jewel Apartments in Broadbeach by Wanda Ridong (Gold Coast)	\$970 million
Pacific Fair redevelopment in Broadbeach by AMP Capital Shopping Centres	\$670 million
Jupiters Hotel and Casino expansion in Broadbeach by Echo Entertainment Group	\$345 million



JOBS NOW, JOBS FOR THE FUTURE
for the Gold Coast and Logan

\$3.211B health budget in 2015-16
for the Metro South and Gold Coast Hospital and Health Services, the primary providers



\$117M over the next four years
for maintenance in Gold Coast and Logan schools



\$13.6M for disaster relief in 2015-16
in partnership with the Australian Government



3,000 JOBS estimated to be supported by the infrastructure program



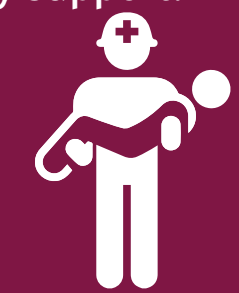
Infrastructure improvement budget

\$1.194 billion budgeted for infrastructure improvements in 2015-16, including:

\$514.3M for transport	\$119.3M for health
\$146.4M for energy and water	\$105.7M for education and training
\$129.7M for tourism, major events, small business and Commonwealth Games	

The Queensland Government employs 30,510 people in the Gold Coast and Logan region and they support:

464 km ² of national and regional parks	1 Aboriginal and Torres Strait Islander Partnership regional office
40 state heritage sites	18 fire stations
5 hospitals and health facilities	1,799 police officers
8 customer service centres and 1,253 km of roads	4 courthouses



For more details visit www.budget.qld.gov.au

Jobs now, jobs for the future for Gold Coast and Logan

The Gold Coast and Logan region encompasses the local government areas of the Gold Coast, Logan and part of Scenic Rim and the major regional towns of Gold Coast, Logan and Beaudesert.

Statewide Initiatives

Tourism and events

\$128.3 million over four years to promote Queensland destinations and foster tourism growth. \$10 million of \$40 million over four years to promote events in Queensland.

Gold Coast and Logan Initiatives

Social housing

\$41.9 million to expand and improve social housing.

Primary school nurse service

\$11.4 million over four years to re-establish a primary school nurse service starting in Logan and surrounding suburbs and to extend this service to other communities across the state.

Disaster relief and recovery

\$13.6 million, in partnership with the Australian Government, for local government recovery and reconstruction projects.

Public library grants

\$3.4 million for new resources for public libraries in the Gold Coast, Logan and Scenic Rim.

1 Schools capital works

\$16.6 million of \$19.1 million over three years for new school facilities.

2 Bromelton roads

\$23.8 million over two years, in partnership with local government, to bypass Beaudesert Township and drive development in Bromelton State Development Area.

3 Health and knowledge precinct

\$4.4 million to develop the nine hectare Health and Knowledge Precinct in the Parklands Priority Development Area, in partnership with the private sector.

4 Yarrabilba roads

\$40 million over three years in partnership with the private sector, for safety works on Waterford-Tamborine Road in Yarrabilba Priority Development Area.

5 Green Mountains Campground

\$250,000 of \$750,000 over three years to upgrade campground facilities in Lamington National Park's Green Mountains Campground.

6 Coomera to Helensvale rail

\$63.3 million of \$163.3 million over four years to duplicate the Gold Coast rail line from Coomera to Helensvale, due for completion in June 2017.

7 Mental health services

\$2 million to increase access and meet ongoing demand for acute and ongoing mental health services.

8 Commonwealth Games venues

In partnership with the Australian Government and the City of Gold Coast:

\$83.6 million of \$130.2 million for the Carrara Precinct.

\$37 million to build the Commonwealth Games Village for athletes.

\$30.7 million of \$39.8 million for the Coomera Indoor Sports Centre.

\$5.1 million of \$12.3 million for the Runaway Bay Sports Centre.

\$5.1 million of \$14.7 million for the Gold Coast Hockey Centre.

\$1.3 million of \$2.7 million for the Broadbeach Bowls Club.

\$1.2 million for the Nerang Bike Trails.

\$333,000 of \$41.3 million for the Gold Coast Aquatic Centre.

9 Roads for Commonwealth Games

\$38 million to widen the Southport-Burleigh Road (High Street, Ferry Road and Bundall Road) from four to six lanes, between North Street and Vespa Crescent. \$15 million of \$30 million for traffic lights at the intersection of Ashmore Road and Ross Street. \$11 million of \$21 million to widen the Southport-Burleigh Road (Bermuda Street) from four to six lanes between Fremar and Rudd Streets.

10 Waterways

\$10.2 million for dredging to improve access and safety in Gold Coast waterways.

11 Pacific Motorway, Coomera

\$48 million of \$74.7 million, in partnership with the Australian Government, to upgrade the interchange at Exit 54 of the Pacific Motorway at Coomera.

12 Burleigh fire and rescue

\$1.6 million of \$1.8 million over two years to complete the upgrade at Burleigh permanent fire and rescue station.

13 Beenleigh Courthouse Refurbishment

\$1.5 million over two years to integrate the Beenleigh Courthouse with the Beenleigh Town Square redevelopment project.

14 Cutting patient wait times

\$6.5 million for Clinical Decision Units within the Gold Coast University Hospital precinct and the emergency department of the Robina Hospital to improve patient flow. \$2.6 million to address current outpatient longwaits.

15 Queensland Ambulance Service

\$3 million over two years for a replacement station at Coral Gardens.



Public safety



Housing and Homelessness



Schools and Education



Roads and Infrastructure



Hospitals and Health



Community



Environment



Science and Innovation



Economy and Jobs

