

Fitzroy has a total population of **233,749***
which is expected to reach **360,000** by 2036
* persons as at 30 June 2014 growing at an annual average rate of 2.0% over the past 10 years

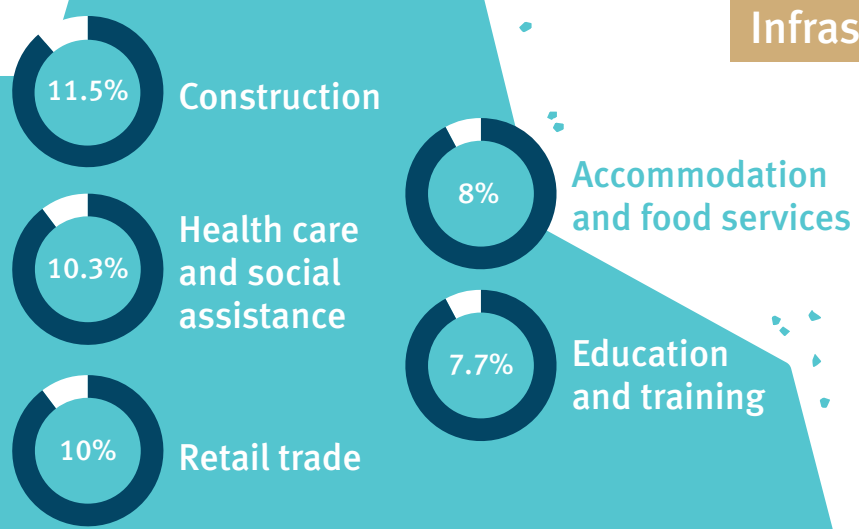


Agricultural production
\$1.008 billion
2012-13

984 residential
buildings approved
for construction
in the 12 months ending 31 March 2015



Top 5 Industries
by number of workers



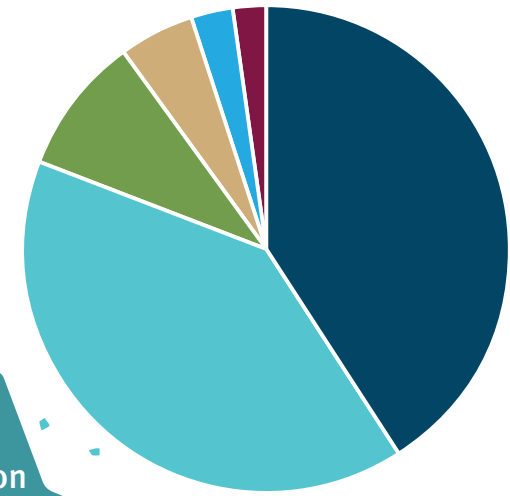
3,168
residential
dwellings sold
in the 12 months ending 31 December 2014

17,721
businesses
in Fitzroy in
2013-14



Infrastructure Improvement Budget

41% Energy and Water 40% Transport and Main Roads
9% Infrastructure, Local Government and Planning
5% Health 3% Education and Training 2% Other



Major private sector investment
projects currently under construction

- \$25 billion**
Australia Pacific LNG project by Origin,
ConocoPhillips and Sinopec
- \$21 billion**
Queensland Curtis LNG project by QGC
- \$19 billion**
Gladstone LNG project by Santos,
PETRONAS, Total and KOGAS

Fitzroy



JOBS NOW, JOBS FOR THE FUTURE
for Fitzroy

\$488M health budget
in 2015-16
for the Central Queensland Hospital and
Health Services, the primary provider



\$48.7M over the next
four years
for maintenance in Fitzroy schools



\$50.1M for disaster relief
in 2015-16
including for Cyclone Marcia relief in partnership
with the Australian Government



2,500 **JOBS**
estimated to be
supported by the
infrastructure program



Infrastructure Improvement Budget

\$892.9 million
budgeted for infrastructure
improvements in 2015-16, including:

\$359.5M for transport	\$46.6M for health
\$364.9M for energy and water	\$31.2M for education and training

**The Queensland Government employs 11,356
people in Fitzroy and they support:**

- 6,737 km² of national and regional parks
- 123 state heritage sites
- 16 hospitals and health facilities
- 11 customer service centres and 3,609 km of roads
- 1 Aboriginal and Torres Strait Islander Partnership regional office
- 22 fire stations
- 550 police officers
- 8 courthouses



For more details visit
www.budget.qld.gov.au



Jobs now, jobs for the future for Fitzroy

The Fitzroy region encompasses the local government areas of Banana, Central Highlands, Gladstone, Rockhampton, Livingstone and Woorabinda, and the major regional towns of Emerald, Gladstone, Rockhampton and Yeppoon.

Statewide Initiatives

Reef Plan response (Sustainable Agriculture)

\$3.2 million of \$15 million over 5 years to implement the Reef Water Quality Protection Plan, including identifying farm management practices, coordinating extension services, providing technical and economic support and monitoring adoption.

Disaster relief and recovery

\$50.1 million, in partnership with the Australian Government, for local government recovery and reconstruction projects.

Resilient communities

\$40 million to establish the Community Resilience Fund to help local governments protect the infrastructure of communities vulnerable to natural disasters.

Stolen wages

\$21 million over three years in reparation for wages stolen from Indigenous workers, a legacy of past government practices.

Drought relief

\$45 million of \$52.1 million over four years for drought assistance and reform initiatives.

Building our Regions-Regional Infrastructure Fund

\$200 million over two years for critical infrastructure projects in regional Queensland.

1 Saving the Great Barrier Reef

\$100 million over 5 years including \$10 million to establish net free fishing zones, in addition to the \$35 million per year currently spent across State Government agencies. Funding will protect the Great Barrier Reef by investing in water quality initiatives and scientific research, as well as helping businesses transition to better environmental practices in the primary production, mining and fishing industries.

2 Port of Gladstone

\$62.3 million to upgrade the RG Tanna Coal Terminal at the Port of Gladstone, due for completion in June 2017.

3 Enhancing Regional Hospitals

\$20.6 million statewide to commence a \$180 million Enhancing Regional Hospitals Program, including Gladstone Emergency Department.

Fitzroy Initiatives

Homelessness

\$5.1 million for specialist homelessness services.

Social housing

\$18 million to expand and improve social housing.

Safer mine water

\$210,000 to monitor flow and salinity levels during mine water releases.

Children's literacy

\$251,750 of \$1 million over 4 years to public libraries to support parents in their child's (0-5) literacy development.

Public library grants

\$1.1 million for resources for public libraries.

Sustainable agriculture and water quality

\$640,000 to target pests and weeds, improve reef water quality and promote and enhance sustainable agriculture.

4 Rockhampton Intensive Care Unit

\$6.5 million to complete the \$12.7 million fitout of the new Intensive Care Unit at Rockhampton Hospital.

5 Conservation

\$50,000 and \$25,000 respectively for the Capricorn and Gladstone Conservation Councils.

6 Schools capital works

\$6.8 million of \$10.7 million over two years for additional school facilities.

7 Callide Power Station Capital Program

\$33.9 million for Callide Power Station to support reliability and efficiency of the plant and supply.

8 Stanwell Power Station

\$51.8 million for operations at Stanwell Power Station.

9 Irrigation efficiency

\$54,000 to help Fitzroy irrigators achieve more productive on-farm water use.

10 Bruce Highway

\$4 million for a four-way signalised intersection and the first leg of 'main street' at Yaamba Road (Bruce Highway) to drive development of CQU Priority Development Area.

11 Yeppoon Foreshore

\$25 million over two years for the Yeppoon foreshore as part of a special assistance package following Tropical Cyclone Marcia for iconic projects.

12 Rockhampton Riverbank

\$15 million over two years for the Rockhampton Riverbank as a special assistance package following Tropical Cycle Marcia for iconic projects.

13 Natural resources recovery

\$50,000 for recovery work in areas affected by Tropical Cyclone Marcia.

14 Mount Morgan mine

\$2.7 million for water management works at the Mount Morgan abandoned mine site, which will help keep contaminated water in check.

15 Drought support for stock routes

\$180,000 for stock owners during periods of drought, including upgrades of priority windmills, water tanks, dams, troughs and other infrastructure.

16 Gregory Highway

\$7.2 million to undertake works on the Gregory Highway between Emerald and Clermont.

17 Queensland Agricultural Training College

\$3.4 million to upgrade infrastructure at the Emerald Agricultural College and Longreach Pastoral College.

18 Blackwater-Rolleston Road

\$3.9 million, in partnership with Central Highlands Regional Council, to pave and seal a 12 km section of the Blackwater-Rolleston Road, Rolleston, due for completion in June 2016.

19 Burnett Highway

\$9 million of \$10 million to widen sections of the Burnett Highway between Monto and Biloela, due for completion in July 2016.

20 Gladstone Watchhouse

\$780,000 to upgrade closed circuit cameras in Gladstone Watchhouse.

21 Dawson Highway

\$11.7 million of \$25.2 million, in partnership with the Australian Government, to improve the Dawson Highway and Phillip Street intersection in Gladstone, due for completion January 2016.

