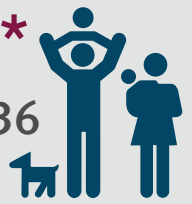


Brisbane has a total population of **1,217,113\*** which is expected to reach **1,528,000** by 2036  
\* persons as at 30 June 2014 growing at an annual average rate of 1.9% over the past 10 years

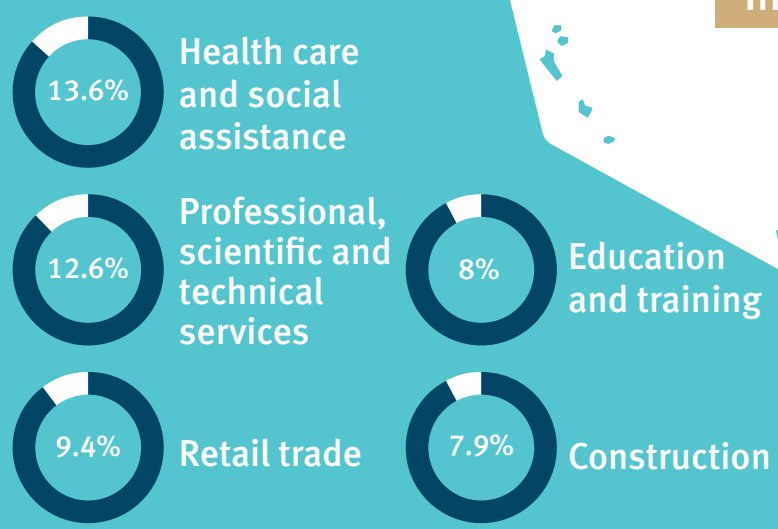


Agricultural production  
**\$78 million**  
2012-13

**15,017** residential buildings approved for construction  
in the 12 months ending 31 March 2015



**Top 5 Industries**  
by number of workers

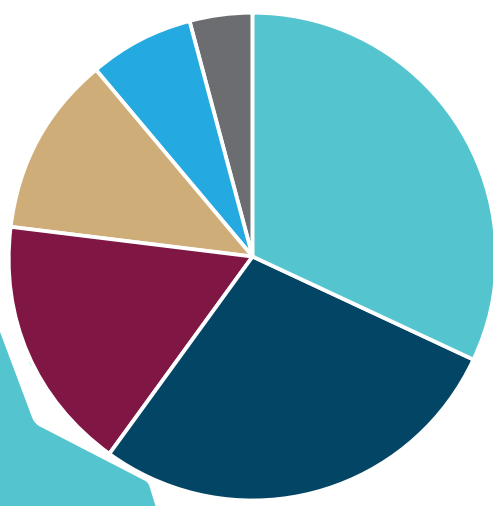
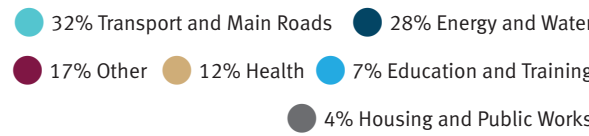


**31,570** residential dwellings sold  
in the 12 months ending 31 December 2014

**120,997** businesses in Brisbane in 2013-14



**Infrastructure improvement budget**



**Major private sector investment projects currently under construction**  
**\$1 billion**

**\$800 million**  
Brisbane Skytower, a residential tower by Billbergia and AMP Capital  
300 George Street Integrated Development (residential, offices and hotel) by Shayher Group and Bao Jia Development

**\$500 million**  
480 Queen St commercial office tower by DEXUS Property Group and Grocon



**Brisbane**



**JOBS NOW, JOBS FOR THE FUTURE**  
for Brisbane

**\$4.808B** health budget in 2015-16  
for the Metro North and Metro South and Children's Health Queensland Hospital and Health Services, the primary providers



**\$163.4M** over the next four years  
for maintenance in Brisbane schools



**\$1.5M** for disaster relief in 2015-16  
in partnership with the Australian Government



**6,000 JOBS** estimated to be supported by the infrastructure program



**Infrastructure improvement budget**

**\$2.166 billion**  
budgeted for infrastructure improvements in 2015-16, including:

<b>\$702.7M</b> for transport	<b>\$251.8M</b> for health
<b>\$616.2M</b> for energy and water	<b>\$155.9M</b> for education and training
<b>\$82.6M</b> for housing and public works	

**The Queensland Government employs 85,488 people in Brisbane and they support:**

- |  |   |
|--|---|
| 362 km <sup>2</sup> of national and regional parks | 1 Aboriginal and Torres Strait Islander Partnership regional office |
| 523 state heritage sites                           | 28 fire stations  |
| 11 hospitals and health facilities                 | 3,781 police officers   |
| 7 customer service centres                         | 7 courthouses   |
| and 720 km of roads                                |   |



For more details visit [www.budget.qld.gov.au](http://www.budget.qld.gov.au)



Jobs now, jobs for the future for Brisbane

The Brisbane region covers the state capital and includes the local government areas of Brisbane and the Redlands.

Statewide Initiatives

Public library grants

\$4.7 million for new resources for public libraries in Brisbane and Redlands.

Air support for police

\$3 million for the second Brisbane-based helicopter service at Archerfield, to support policing operations in the south east corner.



Train station upgrades

\$42.6 million to continue passenger safety and accessibility works, including station upgrade works at Nambour, Alderley, Newmarket, Dinmore, Graceville and detailed design for upgrades at Strathpine, Boondall and Auchenflower train stations.

Brisbane Initiatives

Homelessness

\$30 million for specialist homelessness services.

Social housing

\$94.7 million to expand and improve social housing.

Disaster relief and recovery

\$1.5 million, in partnership with the Australian Government, for local government recovery and reconstruction projects.

Crisis shelter

\$2 million of \$4 million over two years for a 72-hour crisis shelter in Brisbane for women and children escaping violence.

Elderly parent carers

\$3 million of \$4 million over two years for the Elderly Parent Carer Innovation Trial, for older parents with adult sons and daughters with disabilities.

Accommodation for vulnerable people

\$1.5 million for safe, sustainable long-term accommodation in Wynnum and Banyo for people with high and complex needs.

Indigenous land and sea grants

\$50,000 of \$500,000 to support Queensland Indigenous communities to undertake projects to protect and conserve natural and cultural resources.

Schools capital works

\$16.6 million of \$24.4 million over 3 years for additional and replacement classrooms in Brisbane.

Northshore Hamilton

\$51.9 million to continue the \$490.8 million Northshore Hamilton urban redevelopment, in partnership with the private sector.

Walkabout Creek

\$1.5 million of \$2.8 million over six years to redevelop visitor areas at Walkabout Creek Visitor Centre in D'Aguilar National Park.

Gateway upgrade north

State funding of \$232.4 million for the estimated \$1.162 billion upgrade project in partnership with the Australian Government that will upgrade the Gateway to six lanes between Nudgee and Bracken Ridge.

A phase out of sand mining on North Stradbroke Island

\$20 million over five years to develop the North Stradbroke Island Economic Transition Strategy.

Yeerongpilly development

\$5.2 million to continue the Yeerongpilly transit oriented development project, in partnership with the private sector.

State Netball Centre

\$30 million over two years to build a state netball facility, in partnership with Netball Queensland and due for completion in 2017, at the Queensland Sport and Athletic Centre, Nathan.

Commonwealth Games venues

In partnership with the Australian Government, \$3.7 million of \$13.5 million for the Belmont Shooting Centre and \$39.5 million of \$58 million for the Queensland State Velodrome for track cycling.

Junction & Sandgate Rds intersection

\$4.7 million of \$6.9 million to improve the intersection of Junction Road and Sandgate Road, Clayfield, due for completion in June 2016.

PA Hospital

\$19.8 million for the PA Hospital to become one of the first digital hospitals in Australia.

Indooroopilly cycle bridge

\$6.4 million of \$10.5 million to build the Moggill Road Cycle Bridge, Indooroopilly, due for completion in March 2016.

Fire and rescue

\$1.4 million to complete the replacement fire and rescue station at Kemp Place. \$950,000 to complete the \$970,000 fitout of the new headquarters of the Queensland Fire and Emergency Service's swiftwater and technical rescue functions.

Prince Charles Hospital

\$2.6 million to add 8 beds to The Prince Charles Hospital Rehabilitation Unit.

